

# Faculty of Science, CUHK

# POSTGRADUATE

# ADMISSIONS



Faculty of Science is proud to be the home of more than a hundred dedicated scientists conducting cutting-edge research in various areas of science and has been awarded a great number of competitive research grants and awards from many local, mainland, and overseas commissions.

## Research Postgraduate (PhD / MPhil) Programmes

- Biochemistry
- Biology
- Cell and Molecular Biology
- Chemistry
- Earth and Atmospheric Sciences
- Environmental Science
- Food and Nutritional Sciences
- Materials Science and Engineering
- Molecular Biotechnology
- Mathematics
- Physics
- Risk Management Science
- Statistics

## Taught Master (MSc) Programmes

- Accreditation Chemistry
- Advanced Studies in Statistics and Data Science
- Biochemical and Biomedical Sciences
- Data Science and Business Statistics
- Mathematics
- Nutrition, Food Science and Technology
- Physics
- Risk Management Science and Data Analytics



香港中文大學理學院  
**FACULTY OF SCIENCE**  
THE CHINESE UNIVERSITY OF HONG KONG

# Contact details of Programme Offices

## Division of Life Sciences

[www.sls.cuhk.edu.hk](http://www.sls.cuhk.edu.hk)

**MPhil-PhD in Biochemistry**  
**MPhil-PhD in Biology**  
**MPhil-PhD in Cell and Molecular Biology**

☎ (852) 3943 4045 / (852) 3943 6116

✉ [lscipg@cuhk.edu.hk](mailto:lscipg@cuhk.edu.hk)

**MPhil-PhD in Environmental Science**  
**MPhil-PhD in Food and Nutritional Sciences**  
**MPhil-PhD in Molecular Biotechnology**

**MSc in Biochemical & Biomedical Sciences**

☎ (852) 3943 3244 / (852) 3943 6348

✉ [msc-bbs@cuhk.edu.hk](mailto:msc-bbs@cuhk.edu.hk)

**MSc in Nutrition, Food Science & Technology**

☎ (852) 3943 3244 / (852) 3943 6348

✉ [msnfst@cuhk.edu.hk](mailto:msnfst@cuhk.edu.hk)

## Division of Chemistry

[www.chem.cuhk.edu.hk](http://www.chem.cuhk.edu.hk)

**MPhil-PhD in Chemistry**

☎ (852) 3943 3590 ✉ [chemgrad@cuhk.edu.hk](mailto:chemgrad@cuhk.edu.hk)

**MSc in Accreditation Chemistry**

☎ (852) 3943 1304 ✉ [acchem@cuhk.edu.hk](mailto:acchem@cuhk.edu.hk)

## Division of Mathematics

[www.math.cuhk.edu.hk](http://www.math.cuhk.edu.hk)

**MPhil-PhD in Mathematics**

☎ (852) 3943 7988/ ✉ [dept@math.cuhk.edu.hk](mailto:dept@math.cuhk.edu.hk)  
(852) 3943 7729

**MPhil-PhD in Mathematics**

☎ (852) 3943 7988/ ✉ [msc@math.cuhk.edu.hk](mailto:msc@math.cuhk.edu.hk)  
(852) 3943 7729

## Division of Earth and Atmospheric Sciences

[www.cuhk.edu.hk/sci/eas](http://www.cuhk.edu.hk/sci/eas)

**MPhil-PhD in Earth and Atmospheric Sciences**

☎ (852) 3943 9624 /  
(852) 3943 5494 ✉ [eas@cuhk.edu.hk](mailto:eas@cuhk.edu.hk)

## Division of Materials Science and Engineering

[www.phy.cuhk.edu.hk](http://www.phy.cuhk.edu.hk)

**MPhil-PhD in Materials Science and Engineering**

☎ (852) 3943 6302 ✉ [pgadm-mse@phy.cuhk.edu.hk](mailto:pgadm-mse@phy.cuhk.edu.hk)

## Division of Risk Management Science

[www.sta.cuhk.edu.hk](http://www.sta.cuhk.edu.hk)

**MPhil in Risk Management Science**

☎ (852) 3943 7931 ✉ [esthertam@cuhk.edu.hk](mailto:esthertam@cuhk.edu.hk)

**MSc in Risk Management Science and Data Analytics**

☎ (852) 3943 1746 ✉ [rmda@cuhk.edu.hk](mailto:rmda@cuhk.edu.hk)

## Division of Physics

[www.phy.cuhk.edu.hk](http://www.phy.cuhk.edu.hk)

**MPhil-PhD in Physics**

☎ (852) 3943 6302 ✉ [pgadm@phy.cuhk.edu.hk](mailto:pgadm@phy.cuhk.edu.hk)

**MSc in Physics**

☎ (852) 3943 6302 ✉ [msc-adm@phy.cuhk.edu.hk](mailto:msc-adm@phy.cuhk.edu.hk)

## Division of Statistics

[www.sta.cuhk.edu.hk](http://www.sta.cuhk.edu.hk)

**MPhil-PhD in Statistics**

☎ (852) 3943 7931 ✉ [esthertam@cuhk.edu.hk](mailto:esthertam@cuhk.edu.hk)

**MSc in Advanced Studies in Statistics and Data Science**

☎ (852) 3943 9421 ✉ [asds@cuhk.edu.hk](mailto:asds@cuhk.edu.hk)

**MSc in Data Science and Business Statistics**

☎ (852) 3943 1746 ✉ [dsbs@cuhk.edu.hk](mailto:dsbs@cuhk.edu.hk)

### Programmes



### Applications



香港中文大學理學院  
**FACULTY OF SCIENCE**  
THE CHINESE UNIVERSITY OF HONG KONG

# General Admissions Requirements

---

## Doctoral Programmes

Applicants shall have:

- A Master's degree from a recognized university; or
- Graduated from a recognized university and obtained a Bachelor's degree, normally with honours not lower than Second Class; or
- Graduated from an honours programme of a recognized university with a Bachelor's degree, normally achieving an average grade of not lower than "B"; or
- Completed a course of study in a tertiary educational institution and obtained professional or similar qualifications equivalent to an honours degree.

## Master's Programmes

Applicants shall have:

- Graduated from a recognized university and obtained a Bachelor's degree, normally with honours not lower than Second Class; or
- Graduated from an honours programme of a recognized university with a Bachelor's degree, normally achieving an average grade of not lower than "B"; or
- Completed a course of study in a tertiary educational institution and obtained professional or similar qualifications equivalent to an honours degree.



# Sponsorship Opportunities

---

## Hong Kong PhD Fellowship Scheme

The Hong Kong PhD Fellowship Scheme (HKPFS), established by the Hong Kong Research Grants Council (RGC) in 2009, aims at attracting the best and the brightest students from all over the world to pursue their PhD studies in Hong Kong. The Fellowship provides monthly stipend and conference travel allowance for the awardees. Meanwhile, CUHK Vice-Chancellor HKPFS Scholarship offers awardees a tuition fee waiver for their whole normative study period.

For details, please refer to CUHK HKPFS website:

<https://www.gs.cuhk.edu.hk/admissions/scholarships-fees/hkpfs>



# Areas of Excellence Projects

The University Grants Committee (UGC) has selected 24 Areas of Excellence (AoE) projects from eight tertiary institutions in Hong Kong, and 4 out of 9 CUHK AoE projects are led by members of Faculty of Science, they are:



## Probing the Fundamental Structure of Matter with High Energy Particle Collisions

The project team, led by Professor CHU Ming-chung, seizes the emerging opportunities to make breakthrough discoveries of the fundamental structure of matter.



## Centre for Genomic Studies on Plant-Environment Interaction for Sustainable Agriculture and Food Security

The centre, led by Professor LAM Hon-ming, develops plant and agricultural technology with a view to strike a better balance between sustainable agriculture and food security.



## Centre for Organelle Biogenesis and Function

The centre, led by Professor JIANG Liwen, focuses on understanding the biogenesis and functions of organelles. It also addresses potential applications of improving value of plants and crop productivity.



## Centre for Plant and Agricultural Biotechnology

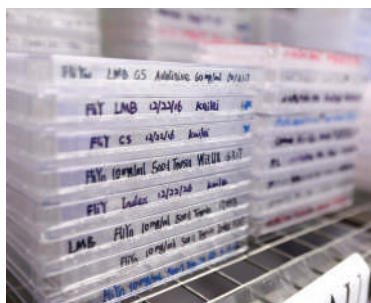
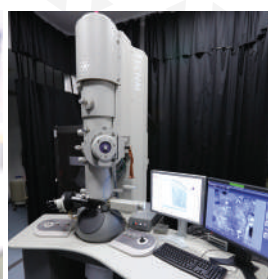
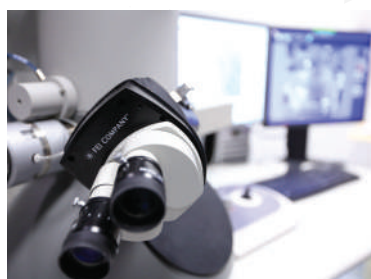
The centre, led by Professor Samuel SUN Sai-ming, aims at boosting crop production and enhancing quality through biotechnology. It also attempts to generate value-added products from crop plants.

# Top - Class Facilities

Faculty of Science has access to an impressive range of world-class facilities, laboratories and institutes. We offer a stimulating, supportive and inspiring environment to our outstanding researchers to carry out their cutting-edge research.

## State Key Laboratories

- State Key Laboratory of Agrobiotechnology
- State Key Laboratory of Synthetic Chemistry



## Research Institutes & Centres

- Centre for Cell and Developmental Biology
- Centre for Mathematical Artificial Intelligence
- Centre for Novel Biomaterials
- Centre of Optical Sciences
- Centre for Protein Science and Crystallography
- Centre for Quantum Coherence
- Centre for Scientific Modelling and Computation
- Food Research Centre
- Hong Kong Bioinformatics Centre
- Hong Kong Institute of Quantum Information Science and Technology
- Institute of Mathematical Sciences
- Institute of Theoretical Physics
- Joint Consortium for Fundamental Physics
- RGC-AoE Centre for Genomic Studies on Plant-Environment Interaction for Sustainable Agriculture and Food Security
- RGC-AoE Centre for Organelle Biogenesis and Function
- Shiu-Ying Hu Herbarium
- Simon F.S. Li Marine Science Laboratory
- Statistical Consulting Services Unit
- UGC-AoE Centre for Plant and Agricultural Biotechnology