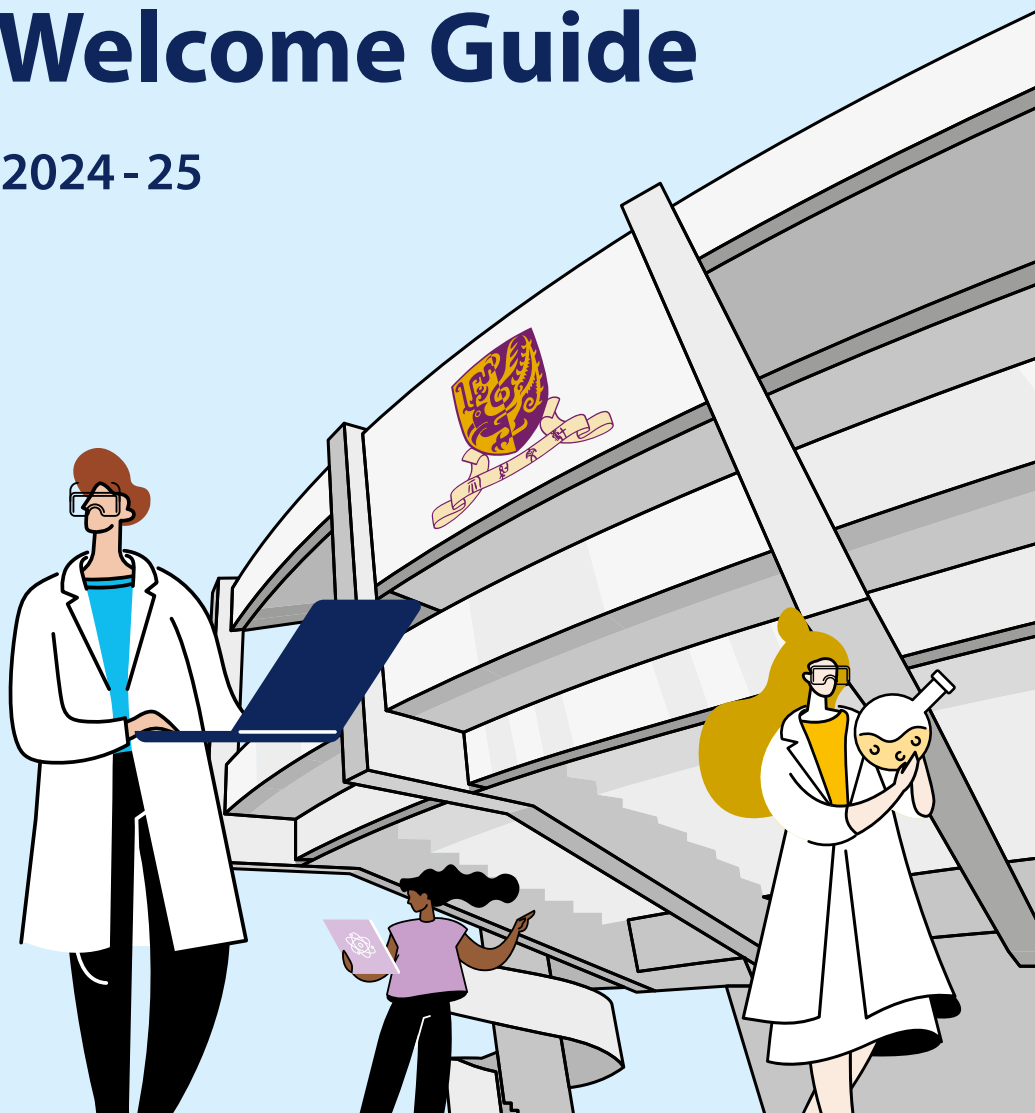


Faculty of Science

Postgraduate Welcome Guide

2024 - 25





Welcome to the Faculty of Science at The Chinese University of Hong Kong (CUHK)

The Faculty of Science at CUHK is dedicated to educating and inspiring the next generation of scientific innovators and leaders, while expanding the frontiers of human knowledge. We take great pride in our community of over a hundred distinguished scientists conducting cutting-edge research across diverse scientific fields. Our faculty have earned a vast number of competitive research grants and awards from local, national, and international commissions, underscoring our commitment to research excellence and the advancement of science over the past six decades.



香港中文大學理學院
FACULTY OF SCIENCE
THE CHINESE UNIVERSITY OF HONG KONG

The Faculty logo reflects the experimental nature of “Science”. It is organic and revolving. It subtly forms a triangular pointer leading forward. The rich colour suggests the solid achievements of the Faculty. The tone and manner of the brand identity is inspirational, powerful and academic.

Table of Contents

Dean's Message		1
Your Study	<ul style="list-style-type: none">● Important Dates● Faculty Dean, Heads of Academic Unit & Graduate Divisions● List of Postgraduate Programmes & Contacts● General Information on Postgraduate Programmes Regulations & Courses<ul style="list-style-type: none">○ Honesty in Academic Work○ Taught Postgraduate (TPg) Programmes○ Research Postgraduate (RPg) Programmes	2 3 4 5
Academic Support	<ul style="list-style-type: none">● Facilities for Learning & Research<ul style="list-style-type: none">○ Research Facilities Available for Postgraduates○ Library Service○ Peer Tutoring Scheme to Improve Your English○ Learning Enhancement Consultation Service● Information Technology Services Centre● Scholarships & Overseas Learning Opportunities● General Reimbursement Procedures for Conferences & Other Expenditures● Course Arrangement under Adverse Weather	11 13 14
Life at CUHK	<ul style="list-style-type: none">● Basic Information about CUHK Campus● Postgraduate & Non-local Student Associations● Student Helper Engagement Scheme	15 16
Wellness & Health	<ul style="list-style-type: none">● University Medical Service● Counselling Service & Mental Wellness Support● Career Guidance & Counselling Service	18
Other Useful Tools/Links	<ul style="list-style-type: none">● CyberDefender● Opening a Student Local Bank Account● MTR Student Travel Scheme	19

This guide is one of many resources to help you familiarise yourself. The information in this guide is current as of 1 August, 2024. This guide should be read in conjunction with University regulations, the Graduate School's Postgraduate Student Handbook and Code of Practice, as they contain important information to support your studies. If you have any concerns, please consult your supervisor or the Graduate Division. They are here to assist you throughout your academic journey.

Dean's Message



Starting a postgraduate study is an important step for building a successful professional career. On behalf of the Faculty of Science at The Chinese University of Hong Kong (CUHK), I would like to extend our warm welcome to you as you begin your postgraduate study at CUHK Science. The Faculty just celebrated its proud 60-year history since its establishment as a founding faculty of CUHK in 1963. We are happy to have you join us as you begin this exciting new chapter.

As a part of a globally leading research university, the Faculty of Science is a vibrant community of scientific education and research for training the next generation of scientific innovators and leaders and for addressing the grand scientific and societal challenges. At CUHK Science, you will be working closely with our world-class and passionate researchers, who will be by your side to guide you on your journey of discovery and innovation, encourage you to push the boundaries of knowledge to make significant contributions to your field of study.

Our faculty is committed to fostering a collaborative and inclusive environment, where you will find a diverse community of students and staff. Engage with your peers, participate in academic, professional and social activities, and embrace the opportunity to collaborate across disciplines. To support you throughout your time at CUHK Science, we have invested in state-of-the-art learning and research facilities, as well as comprehensive academic and living resources. Please take advantage of these resources, and know that we are here to support and facilitate your research endeavours and enrich your personal growth.

I hope that your journey at CUHK Science will be truly transformative and your time with us will be both fulfilling and rewarding.

SONG Chunshan

Dean of Science
Wei Lun Professor of Chemistry

Science *Empowers* Your Dreams
Learn Science to *Better* the World

Important Dates

1st Term2nd Term

Summer Session

Academic
Calendar

	S	M	T	W	T	F	S
2024					1	2	3
AUG	4	5	6	7	8	9	10
			Course Registration				
	11	12	13	14	15	16	17
	18	19	20	21	22	23	24
	25	26	27	28	29	30	31
SEP	1	2	3	4	5	6	7
		Add/Drop					
	8	9	10	11	12	13	14
		Add/Drop					
	15	16	17	18	19	20	21
		Add/Drop					
	22	23	24	25	26	27	28
	29	30	1	2	3	4	5
OCT	6	7	8	9	10	11	12
	13	14	15	16	17	18	19
	20	21	22	23	24	25	26
	27	28	29	30	31	1	2
NOV	3	4	5	6	7	8	9
	10	11	12	13	14	15	16
	17	18	19	20	21	22	23
	24	25	26	27	28	29	30
DEC	1	2	3	4	5	6	7
	8	9	10	11	12	13	14
	15	16	17	18	19	20	21
	22	23	24	25	26	27	28
	29	30	31				

Change of Study Mode

Within normative study period and before the close of add/drop period for the current term

Change of Programme

One month before commencement of term

	S	M	T	W	T	F	S
2025				1	2	3	4
JAN	5	6	7	8	9	10	11
		Add/Drop					
	12	13	14	15	16	17	18
		Add/Drop					
	19	20	21	22	23	24	25
		Add/Drop					
	26	27	28	29	30	31	1
FEB	2	3	4	5	6	7	8
	9	10	11	12	13	14	15
	16	17	18	19	20	21	22
	23	24	25	26	27	28	1
MAR	2	3	4	5	6	7	8
	9	10	11	12	13	14	15
	16	17	18	19	20	21	22
	23	24	25	26	27	28	29
	30	31	1	2	3	4	5
APR	6	7	8	9	10	11	12
	13	14	15	16	17	18	19
	20	21	22	23	24	25	26
	27	28	29	30	1	2	3
MAY	4	5	6	7	8	9	10
	11	12	13	14	15	16	17
		Add/Drop					
	18	19	20	21	22	23	24
		Add/Drop					
	25	26	27	28	29	30	31
		Add/Drop					
JUN	1	2	3	4	5	6	7
	8	9	10	11	12	13	14
	15	16	17	18	19	20	21
	22	23	24	25	26	27	28
	29	30					

With effect from the 2021-22 academic year, the University will have three degree conferment dates in each year.

Deadline for Final Thesis Submission to Graduate School Office (GSO)*

28 Feb

30 Jun

31 Aug

Degree Conferment Date

31 Mar

31 Jul

15 Oct

* Declaration of intention to submit thesis should be completed 4 months before final thesis submission.

Faculty Dean, Heads of Academic Unit & Graduate Divisions

Dean of Science



Prof. SONG Chunshan

Heads of Academic Units



**Prof. CHAN
Ho Yin Edwin**
School of
Life Sciences



**Prof. KWONG
Fuk Yee Michael**
Department of
Chemistry



**Prof. CHOW
Tat Shing Alex**
Department of Earth
& Environmental
Sciences



Prof. ZOU Jun
Department of
Mathematics



**Prof. WANG
Jianfang**
Department of
Physics



**Prof. WANG
Junhui**
Department of
Statistics

Heads of Graduate Divisions



**Prof. CHEUNG
Chi Keung
Peter**
Division of
Life Sciences



**Prof. MIAO
Qian**
Division of
Chemistry



**Prof. YANG
Hongfeng**
Division of Earth
& Environmental
Sciences
*Till 31 Dec 2024



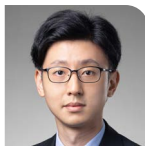
Prof. LIU Lin
Division of Earth
& Environmental
Sciences
*Starting from 1 Jan 2025



**Prof. FENG
Dejun**
Division of
Mathematics



Prof. ZHU Junyi
Division of Physics
and Division of
Materials Science &
Engineering



Prof. SIT Tony
Division of Risk
Management
Science



**Prof. WEI
Yingying**
Division of Statistics

List of Postgraduate Programmes & Contacts

Graduate Division of Life Sciences

under School of Life Sciences

MPhil-PhD in:

- Biochemistry
 - Cell & Molecular Biology
 - Food & Nutritional Sciences
 - Biology
 - Environmental Science
 - Molecular Biotechnology
- ☎ (852) 3943 4045 / 3943 6348 ✉ lscipg@cuhk.edu.hk

MSc in Biochemical & Biomedical Sciences

☎ (852) 3943 6116 / 3943 3244 ✉ msc-bbs@cuhk.edu.hk

MSc in Nutrition, Food Science & Technology

☎ (852) 3943 3244 / 3943 6116 ✉ msnfst@cuhk.edu.hk

Graduate Division of Chemistry

under Department of Chemistry

MPhil-PhD in Chemistry

☎ (852) 3943 3590 ✉ chemgrad@cuhk.edu.hk

MSc in Accreditation Chemistry

☎ (852) 3943 1304 ✉ accchem@cuhk.edu.hk

Graduate Division of Earth & Environmental Sciences

under Department of Earth & Environmental Sciences

MPhil-PhD in Earth & Atmospheric Sciences

☎ (852) 3943 9323 / 3943 9624 ✉ eas@cuhk.edu.hk

Graduate Division of Mathematics

under Department of Mathematics

MPhil-PhD in Mathematics

☎ (852) 3943 7988 / 3943 7729 ✉ dept@math.cuhk.edu.hk

MSc in Mathematics

☎ (852) 3943 7988 / 3943 7729 ✉ msc@math.cuhk.edu.hk

Graduate Division of Materials Science & Engineering

under Department of Physics

MPhil-PhD in Materials Science & Engineering

☎ (852) 3943 6302 ✉ pgadm-mse@phy.cuhk.edu.hk

Graduate Division of Physics

under Department of Physics

MPhil-PhD in Physics

☎ (852) 3943 6302 ✉ pgadm@phy.cuhk.edu.hk

MSc in Physics

☎ (852) 3943 6302 ✉ msc-adm@phy.cuhk.edu.hk

Graduate Division of Risk Management Science

under Department of Statistics

MPhil in Risk Management Science

☎ (852) 3943 7931 ✉ esthertam@cuhk.edu.hk

MSc in Risk Management Science & Data Analytics

☎ (852) 3943 1746 ✉ rmda@cuhk.edu.hk

Graduate Division of Statistics

under Department of Statistics

MPhil-PhD in Statistics

☎ (852) 3943 7931 ✉ esthertam@cuhk.edu.hk

MSc in Advanced Studies in Statistics & Data Science

☎ (852) 3943 9421 ✉ asds@cuhk.edu.hk

MSc in Data Science & Business Statistics

☎ (852) 3943 1746 ✉ dsbs@cuhk.edu.hk

General Information on Postgraduate Programmes Regulations & Courses

CUHK Science offers more than 20 postgraduate (PG) programmes, with about 1100 postgraduate students studying across eight Graduate Divisions. It is important to take timely actions to maintain the student status by observing relevant rules and regulations, enrolling course(s), achieving satisfactory academic performance and progress, and paying fees according to respective schedules.

Every postgraduate student is assigned an "Academic Advisor", who will provide general advice for students on issues such as course selection, guided study and adaptation to University learning mode.



Academic Advisory System



Honesty in Academic Work

CUHK places very high importance on honesty in academic work submitted by students, and adopts a policy of ZERO tolerance on academic dishonesty.



Academic Honesty Guide



Fabrication

Inaccurate Citation

Plagiarism

Collusion

Undeclared Multiple Submissions

Misrepresentation

For any enquiries, please contact your respective Graduate Division.

Taught Postgraduate (TPg) Programmes

All TPg students are required to fulfil a set of graduation requirements as prescribed by the programme in order to graduate. Students should refer to the Course List, Course Description, and Study Scheme of their own programmes in the *Postgraduate Student Handbook* for details.



Code of Practice "CoP" (TPg)



GSO PG Student Handbook



Not less than
24 units

Take at least one course in each term; Approval is required otherwise

Study Period	Normative		Maximum	
	Full-time	Part-time	Full-time	Part-time
	12 months	24 months	36 months	48 months



Beyond the normative study period, students will be classified as "Continuing Students". A student who cannot complete all requirements within the maximum study period shall be **DISCONTINUED** from studies at the University.

Leave of Absence	Medical Leave > 3 weeks	Non-medical Leave ≥ 1 month
	Supported by a medical certificate signed by a registered medical practitioner	Considered as taken leave for the given term



Leave Application Guide



A student who has been absent without approved leave of absence or who is in breach of the residence requirements for a continuous period exceeding ONE month will be considered as having **WITHDRAWN** from studies.

Academic Performance

Academic Probation	<ul style="list-style-type: none"> Cumulative GPA (cGPA) < 2.0 Probation shall be lifted when cGPA ≥ 2.0 or attained satisfactory progress
Unsatisfactory Performance Leading to Discontinuation	<ul style="list-style-type: none"> cGPA ≤ 1.0; or Fails to have probation lifted after being put on academic probation for 2 consecutive terms of attendance; or Other requirements laid down by the Graduate Division are not satisfied

Please contact your respective Graduate Division for more information.

Research Postgraduate (RPg) Programmes

All RPg students are required to fulfil a set of graduation requirements as prescribed by the programme in order to graduate. Students should refer to the Course List, Course Description, and Study Scheme of their own programmes in the *Postgraduate Student Handbook* for details.



Code of Practice
"CoP" (RPg)



GSO PG
Student Handbook

Not less than
12 units of
course requirements
for students of articulated
MPhil-PhD
Programmes



Study * Period	Degree	Research master's degree	Normative		Maximum	
			Full-time	Part-time	Full-time	Part-time
	PhD	✓	36 months	48 months	84 months	96 months
		✗	48 months	64 months	84 months	96 months
	PhD (MPhil-PhD Programmes)	✓	36 months	48 months	72 months	84 months
		✗	48 months	64 months	84 months	100 months
	MPhil	N/A	24 months	36 months	48 months	60 months

* The University reserves absolute discretion to decide whether the degree possessed by a student is a research master's degree or not, such decision to be communicated through the admission notification.



Beyond the normative study period, students will be classified as Continuing Students. A student who cannot complete all requirements within the maximum study period shall be **DISCONTINUED** from studies at the University.

Leave of Absence	Annual Leave with PGS ^Δ	Academic Leave with PGS ^Δ	Non-Academic Leave
	14 days per academic year including medical leave [#]	In-residence leave for conference and other academic purposes	No-pay leave i.e. leave with PGS ^Δ suspended



Leave
Application
Guide



Application Pathway

MyCUHK ► CUSIS ► Applications ► Online Application (PG)

^Δ PGS: Postgraduate Studentship

[#] For medical leave >3 weeks, a medical certificate signed by a registered medical practitioner shall be provided and additional endorsement is required. Please contact your respective Graduate Division for more information.



ALWAYS reserve sufficient time to submit your leave application and seek your principal supervisor's endorsement before taking any leave. A student who has been absent without approved leave of absence for a continuous period >1 month will be considered as having **WITHDRAWN** from studies.

Candidacy Examination and Qualifying Examination are two different terms used in the assessment of PhD students who are admitted under the "articulated" (i.e. MPhil- PhD) and "non-articulated" programmes, respectively.

Candidacy Examination

Maximum period for students from "articulated programme" to pass the candidacy requirements, counted from first entry to the programme:

Degree	Research master's degree	Mode of Study	
		Full-time	Part-time
PhD	✓	24 months	32 months
PhD	✗	36 months	48 months

Qualifying Examination

For "non-articulated" programmes, Qualifying Examination should be taken **within first two years** in general, but students should consult with their respective Graduate Divisions.

Academic Progress

Study Plan

Submit at the **BEGINNING** of
each academic year

Progress Report

Submit at the **END** of
each academic year



Submission Pathway

MyCUHK ► CUSIS ► Academic Progress ► Study Plan & Progress (RPG)



[Learn More](#)

Academic Performance

Academic Probation

- Cumulative GPA (cGPA) < 2.0
- Probation shall be lifted when cGPA ≥ 2.0 or attained satisfactory progress

Unsatisfactory Performance Leading to Discontinuation

- cGPA ≤ 1.0; or
- Fails to have probation lifted after being put on academic probation for 2 consecutive terms of attendance; or
- Other requirements laid down by the Graduate Division are not satisfied

Please contact your respective Graduate Division for more information.

Improving Postgraduate Learning (IPL) & Research Ethics Training (RET)



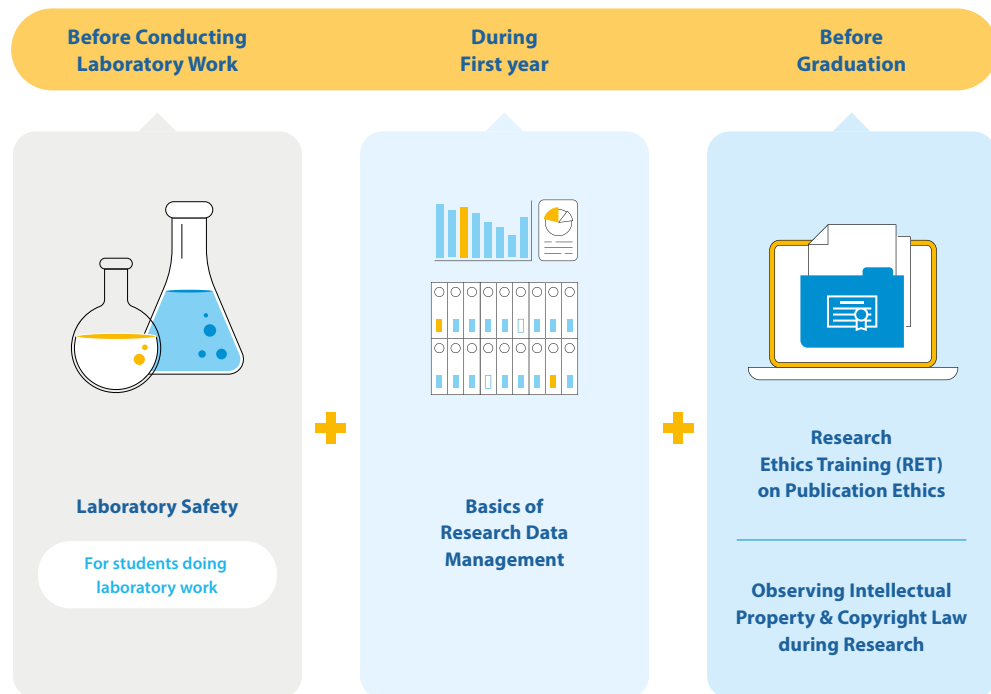
IPL



RET

Required Courses/Modules

The IPL programmes are organised by Graduate School Office (GSO) and Centre for Learning Enhancement and Research (CLEAR).



In each IPL & RET, you need to:



Attend courses/
Complete all online modules



Pass examination
(On-site/Online)



Attendance will be reported to the respective Graduate Division and supervisors. Students who fail to meet the course requirements, including attendance, may jeopardise their eligibility to take the candidacy exam or graduate on time.

Other Recommended Modules

CUHK Library also offers workshops for postgraduates, researchers and faculty members. These workshops are designed to enhance research skills and provide valuable resources for academic work.



Learn More

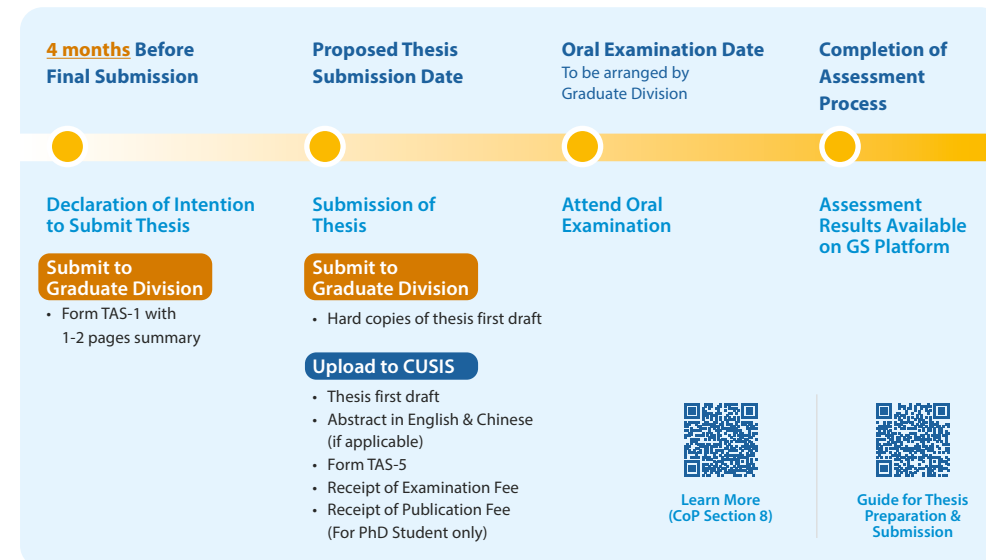
Please contact your respective Graduate Division for more information.

Thesis Writing & Submission Procedures

Students should be mindful of the Thesis/Portfolio Submission Deadline and take timely action.

Deadline for Final Thesis Submission to GSO	28 Feb	30 Jun	31 Aug
Degree Conferment Date	31 Mar	31 Jul	15 Oct

Assessment Process



If a student fails to submit the thesis or complete program requirements by the deadline/submission is not passed, then he/she will be put on "continuing status" until the successful completion of the thesis/reaching the maximum study period.

GSO has also published a document "Research and Thesis Writing" which focuses on the structure of a thesis and provides advice on the areas of research and thesis writing techniques.



Access Pathway

GS Platform (Students)



Research and Thesis Writing

Departmental Duties & Teaching Assistance

As a condition of the Postgraduate Studentship (PGS) award, RPg students shall carry out duty assignments relating to teaching and research as part of their postgraduate studies, normally not more than 12 hours per week on average.

Students who will take up teaching assistant (TA) duties are required to attend "Professional Development Course for Teaching Assistants" IPL courses offered by CLEAR.

Please contact your respective Graduate Division for more information.

Facilities for Learning & Research

Research Facilities Available for Postgraduates

Below is a brief introduction to the research facilities available in each academic unit. Please consult your supervisors and the respective Graduate Division for more information.

Chemistry



- Glass Blowing Workshop
- Mass Spectrometer
- Mechanical Services Unit
- NMR Spectrometers
- Single-crystal-x-ray-diffractometers

Mr. WOO Ka Fai (852) 3943 8125 SC 332B
Mr. LIN Chun Wah (852) 3943 8139 SC G55

Earth & Environmental Sciences



- Computing Laboratory
- Soil and Water Quality Analyses in Environmental Science and Technology Laboratory

Mr. Eric CHOI (852) 3943 9853 MMW 303
Ms. Nico LI (852) 3943 5303 MMW 303

Life Sciences



- Biochemical Analysis
- Biochemical Purification
- Biophysical Instrumentation
- Cell/Plant Culture
- Centre for Cell and Developmental Biology
- Mechanical Services Unit
- Microscopy and Imaging System
- Protein Centre and Crystallography

Ms. Irene LAU (852) 3943 6256 SC G89

Mathematics



- Computing Laboratory
- GPU Servers

Mr. Michael AU YEUNG (852) 3943 1897 LSB 232B
Mr. LIU Feilan (852) 3943 7735 LSB 232B

Physics



- Computational Facilities
- Equipment for Optical Measurement
- Materials Characterisation
- Mechanical Services Unit
- Thin Film Deposition Facilities

Mr. YEUNG Man Hau (852) 3943 4069 SC G17

Statistics



- Bloomberg Professional Service and Moody's Default & Recovery Database
- Bloomberg Terminal
- Computing Laboratory
- GPU-powered Computing Cluster

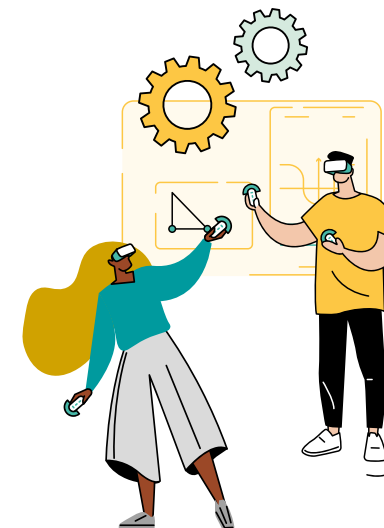
Mr. Michael LEUNG (852) 3943 7933 LSB G23
Mr. Julian WONG (852) 3943 7934 LSB G23

Library Service

Learning Garden equips with computer workstations consisting of both Mac and PC computers, moveable SMART Board and TV designed for group work and flexibility. MakerSpace provides 3D printing and 3D scanning, AR & VR equipment and software, laser cutting & UV printing, software for image editing, 3D modelling, etc.



Learning Garden & MakerSpace



Peer Tutoring Scheme to Improve Your English

Organised by English Language Teaching Unit (ELTU), "Peer Tutoring Scheme" offers informal opportunities for students to consult trained Peer Tutors on the use of English language in different areas of need, in particular, speaking and writing.



ELTU

Learning Enhancement Consultation Service

The Learning Enhancement Officers (LEOs) run a regular drop-in consultation service during term time for full-time postgraduate students to meet with the LEOs face-to-face to discuss anything about study and answer questions.



LEOs



Information Technology Services Centre

Information Technology Services Centre (ITSC) has consolidated some essential IT services for you as a new student quick start guide. These include using vital IT services such as email, Wi-Fi, teaching tools, and free software to facilitate your study.



ITSC



Scholarships & Overseas Learning Opportunities

There are a wide range of scholarships and financial support that may be applicable for you. Below are some examples that you may consider.

Scholarships Opportunities

Below are some scholarships available for application/nomination by your Graduate Division

- Belt and Road Scholarship (RPg)
- CUHK Convocation Postgraduate Admission Scholarships (TPg)
- Croucher Scholarships for Doctoral Study
- Croucher Fellowships for Postdoctoral Research
- RGC Postdoctoral Fellowship Scheme
- Schmidt Science Fellows
- Young Scholars Thesis Award

Overseas Learning Opportunities

- CAS-CUHK Student Internship Programme
- Dr. Barbara Kwok Young Postdoctoral Researcher Travel Grants
- PhD International Mobility for Partnerships and Collaborations Award
- Research Postgraduate Student Grant for Overseas Academic Activities
- Science Faculty Dean's Postgraduate Conference Award
- Other Financial Supports from Graduate Divisions

Visit the following websites for more scholarships and overseas learning opportunities:

Please contact your respective Graduate Division for more information.



Office of
Admissions &
Financial Aid



Graduate
School
Office



Office of
Academic
Links

General Reimbursement Procedures for Conferences & Other Expenditures

The checklists below would help you apply the reimbursement for conference trips and other expenses.

Checklist for General Expenses

- ☐ Discuss with your supervisor the needs of purchasing specific items
- ☐ Consult for the requirements/guidelines before purchasing
- ☐ Follow the requirements and keep ALL required documents, e.g. invoices, transaction record, delivery notes and receipts and submit them to responsible staff for reimbursement

Checklist for General Conference Trips

- ☐ Check the aforementioned websites or ask your Graduate Division for the funding support opportunities
- ☐ Inform your supervisor about your conference plan and submit your application
- ☐ Keep ALL required documents related to the conference, e.g. acceptance notice/ invitation letter, conference programme
- ☐ Keep ALL original receipts/invoices, e.g. registration fee, airfares, hotel reservation, boarding pass etc.
- ☐ Submit your reimbursement request



Course Arrangement under Adverse Weather



GSO PG
Student Handbook



Detailed Guideline

Graduate School PG Student Handbook
General Arrangements for Classes and Examinations on Approach of Typhoons and Rainstorms

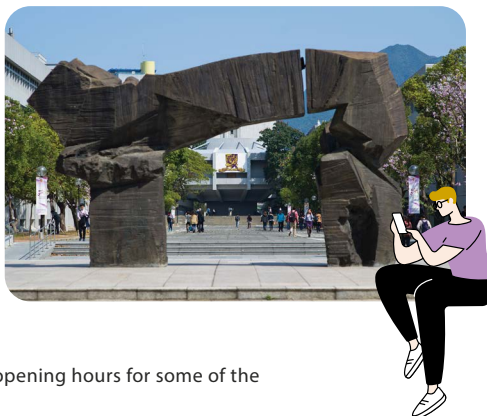
Please contact your respective Graduate Division for more information.

Basic Information about CUHK Campus

At CUHK Science, we not only value your academic journey but also prioritise your overall well-being and daily life. We understand that a fulfilling student experience encompasses more than just studying. The following sections will provide you with handy information and resources to enrich your experience at CUHK.



CUHK Map



Below may be essential to your campus life; locations and opening hours for some of the facilities can also be found in CUHK Mobile App.



Accommodation

1,600+ hostel places for PG students



Learn More



Libraries

6 at CUHK campus
1 at Prince of Wales Hospital



Learn More



Sports Facilities & Amenities

Including sports fields, gymnasia, swimming pool, tennis courts, squash courts and Water Sports Centre



Learn More



CUHK Conveniences

Supermarket, Bookstore, Mailing*, Restaurants

** Stamps are available for purchase in convenience stores or post offices.*



Learn More



Transportation

CUHK offers free school bus services* for CUHK students and staff, including Campus Shuttle School Bus & Meet-Class School Bus.

** Free On-campus Rehabilitation Bus Service is also available.*



Learn More

Download
CUHK
Mobile App



Available on the
App Store



GET IT ON
Google Play

Postgraduate & Non-local Student Associations

To encourage cultural exchange and peer support on campus, there are numerous postgraduate and non-local student associations at CUHK.



Office of Student Affairs



Student Helper Engagement Scheme



SHES

The purpose of the Student Helper Engagement Scheme (SHES) is to provide opportunities for paid campus work to students, in the form of assisting University academics/administrators in their projects.

Eligible

- ✓ Local registered full-time CUHK students
- ✓ Non-local registered full-time CUHK students with No Objection Letter (NOL) issued by HKSAR Immigration Department
- ✓ Full-time postgraduate students receiving studentship and the like from the University with approval of Heads of Graduate Divisions

Not Eligible

- ✗ Exchange-in students
- ✗ Associate students
- ✗ Students during suspension period except for exchange-out/study abroad*
- ✗ Postgraduate student taking Leave of Absence*

* Registration for SHES will be allowed when the suspension/leave of absence ends

Student Helper Engagement Scheme



Student Helper Registration

for 1st time Helper

Complete student helper web form on MyCUHK

including input bank account



Registration Guide*

Receive notification email

for success creation of account

Complete Self-certificate Form in Student Helper System (SHS)

for Mandatory Provident Fund (MPF) account opening



Work Hours Input by Helper

Input actual time record & funding source in SHS after work is done



User Manual*



Log Sheet for Non-local Students*

View "My Working Hours"

View payslips

Submit on or before 2nd last working day of the month



Paid by 7th of the following month

Submit on or before 4th working day of the following month



Paid by middle of the following month

* CUHK login is required to view the content.



Students must carefully check their eligibility before enrolling in the SHES program to ensure they **DO NOT VIOLATE THE HKSAR LABOUR LAWS**. Number of working hours per academic year should not exceed the limits as prescribed by the Graduate Council.

Wellness & Health

University Medical Service

The University Medical Service Office (UMSO) is responsible for providing comprehensive medical services to the university community. CUHK Chinese Medicine Specialty Clinic cum Clinical Teaching and Research Centre provides professional Chinese medicine service to the public.



UMSO



Chinese Medicine Service

Make an appointment

Outpatient Clinic

☎ (852) 3943 6439
or book online

Dental Service

☎ (852) 3943 6412

Chinese Medicine Service

☎ (852) 3943 9933



Counselling Service & Mental Wellness Support

The Wellness and Counselling Centre (WACC) aims to assist students to overcome challenges in adjusting to university life, to pursue success and satisfaction from university experiences, and to foster personal growth and well-being. WACC offers a range of psychological and counselling services, mental wellness initiatives and training for students. The professional team of student counsellors is ready to support you.



WACC

WACC also provides online platforms with handy information about mental health and related activities. Check out the self-help articles and resources (including Psychological Counselling Service) from WACC website.

Career Guidance & Counselling Service

Both University and the Faculty are committed to supporting students' career planning by providing recruitment and career counselling services.

Career Planning and Development Centre (CPDC)

✉ cpdc@cuhk.edu.hk

📷 cuhk_osa_cpdc

📺 cuhkoscpcdc

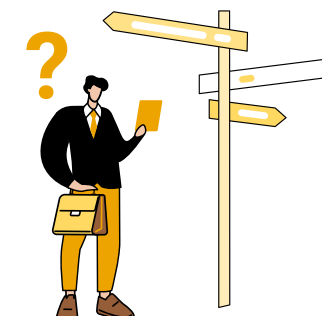


Learn More

Science Faculty Career Development Activities



Learn More



Other Useful Tools/Links



CyberDefender

Supported by the Cyber Security and Technology Crime Bureau of the Hong Kong Police Force, this website provides information about cyber security, information security and cybercrime. You can also download "Scameter+" mobile app to identify frauds and online pitfalls.



Cyber-Defender

Opening a Student Local Bank Account

If you have not opened a bank account yet, there are two banks located on CUHK campus - Hang Seng Bank and The Bank of East Asia.

On-Campus Bank

Branch Location

Hang Seng Bank

1/F, John Fulton Centre

The Bank of East Asia

1/F, Pommerenke Student Centre

MTR Student Travel Scheme

Students between 12-25 years old, enrolled full-time at CUHK, are eligible for a Personalised Octopus card to get concessionary MTR fares. Verify your student status with the Graduate Division before applying at the MTR customer service centre.



MTR

MTR Hotline: (852) 2881 8888

Diversity & Inclusion

The Faculty is committed to building a welcoming community founded on the core values of openness, civility, and inclusivity. We strive to ensure that admission and advancement are determined solely by personal merit and performance, with due respect for one another regardless of differences. Our aim is to be a place where you can get closer to reaching your dreams.



We Love Hearing from You

The Faculty highly values open communication and strives to create a supportive and engaging environment for our postgraduate students. We encourage you to reach out to us with any questions, concerns, or suggestions you may have during your academic journey.

Our dedicated faculty members and academic units are here to provide guidance and support. Whether you need assistance with your research, have inquiries about course selection, or simply want to share your thoughts, we are eager to hear from you.

Deanery:

Centre: Prof. SONG Chunshan

From left: Prof. NGAI To, Prof. WONG Hoi Ying,
Prof. YAM Sheung Chi Phillip, Prof. KWAN Kin Ming,
Prof. AU Wing Ngor Shannon, Prof. JIANG Liwen



Deanery

Acknowledgement

We wish to acknowledge the providers of the up-to-date information and resources for this booklet, including The Chinese University of Hong Kong and its various units/offices, and the public and private organisations listed in the booklet.

CUHK Faculty of Science

Room G43, G/F, Charles Kuen Kao Building,
Science Centre (North Block),
The Chinese University of Hong Kong,
Shatin, N.T., HKSAR



(852) 3943 6327



CUHKScience



sfo@cuhk.edu.hk



CUHKScienceFaculty



www.sci.cuhk.edu.hk